

Corporate Supporter Information



Living well, dying well, never alone

About us

Tapping House is a hospice charity that believes in 'rest of life' not end of life.

We provide free care, comfort and compassion to adults in Norfolk and North Cambridgeshire living with life-limiting illnesses. We also work with families along the way and offer bereavement support. We are the only independent Hospice in this part of the UK, which enables us to deliver the most compassionate, dynamic and proactive rest-of-life care. As such, we are a centre of clinical excellence in the region and further afield, recognised at the forefront of education in palliative care for over 40 years.

We believe in living life to the end and bringing joy to patient's lives. We work with everyone as an individual, supporting them on each step of their journey through our outpatient unit, our inpatient unit, and in their own homes to live a good life and achieve a good death, in their place of choice. We help people affected by life-limiting conditions to make the best of the rest of life, and we help those who are important to them to navigate their loss.

Our Vision is that **every person affected by a life-limiting condition will be offered choice and access to excellent rest-of-life care and bereavement support.**



Opportunities to get involved



Charity of The Year Partnership

By making a decision to support the Tapping House as your business' Charity of The Year we can work collaboratively to design a bespoke package of support throughout the year, that will engage your staff and build team spirit.



Donate Days

Each bag of donations is worth approx. £30 to our retail team when sold on in our charity shops. Hold a Donate Day at your work place and oust your unwanted items while supporting the work of the Hospice. Twenty bags would add £600 to your fundraising target!



Volunteering

Volunteering both onsite at Tapping House and out at events gives employees the chance to build connections with their local communities and give back to society while working on issues they feel passionately about. Further benefits include improved communication, increased confidence and motivation, team working and an overall sense of fulfilment.



Challenge Events

These can be a brilliant way of pushing yourself to tick off bucket list dreams, as well as raising vital funds for our care. Taking part as a group is also a fantastic team building opportunity. From sky dives, marathons, to mountain walks, we have a range of opportunities for teams or individuals. See our 2025 calendar of events or speak to our team for more details.



Sponsorship

Sponsorship and marketing opportunities at Hospice events, give your company positive publicity and increasing brand exposure. Your logo, staff and messages can feature in our high profile events, our marketing and across our socials to thousands of households in the community.



Compassionate Friends Skills Workshop

Compassionate Communities is a growing social movement that is determined to dispel myths about dying and bereavement. We aim to help your team become better informed and more confident in having these important conversations, as well as build communications skills.



Gifts in Kind & Amazon Wishlist

We are also grateful for partners to donate gifts in kind. Your business may sell or produce an item that we would usually have to purchase - everything from food, to furniture to technology. We also have an Amazon wishlist for items needed by our care team and patients. The value of these items can be added to your overall fundraising total.



Host your next meeting with us

We have various rooms and spaces available to hire here at the Hospice. Whether you're planning a team meeting, virtual training sessions or presentations, our space is equipped to meet your needs. We can also offer catering services, providing refreshments for you and your team. Get in touch for your next meeting...

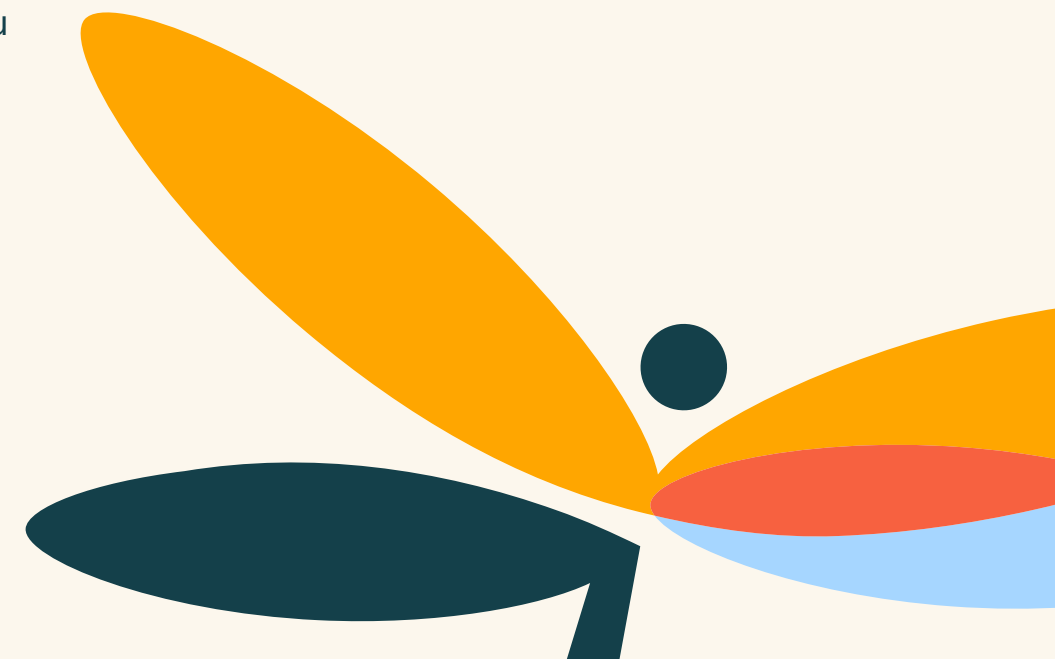
Stay in touch with us...

Lindsey Atkin, Corporate Partnerships Manager

lindsey.atkin@tappinghouse.org.uk

01485 601701

Wheatfields, Hillington, King's Lynn, PE31 6BH



2025 Upcoming Events ...

January

Gift it Again Appeal

If you received a gift at Christmas that wasn't quite right or won't get used please consider recycling it as a donation to us.

Alcohol, gift sets, chocolates and games make brilliant prizes for raffles and tombolas to help us with our fundraising throughout the year.



February

Valentine's fundraiser; Make Your Love Count

Complete a total of 14 miles in 14 days, in any way you please, between the 14th and 28th February.

Swimarathon

Sponsored swim for 60 minutes in teams of 6. Either in King's Lynn or Hunstanton.



April

London Marathon - Places available for 2026

London Landmarks Half Marathon - Places available for 2026

Tulips for Tapping Event

Whether it is volunteering, sponsoring or advertising, there are lots of way to get involved in this event. Please get in touch if you would like to know more.



May

Grand East Anglian Run (GEAR) - 10km in Kings Lynn

Volunteering at Stody Lodge Open Gardens and Lexham Hall Open Gardens

Our Open Garden events require a small team of people to help set up and sell refreshments.



June

Volunteer Thank You Event Sponsorship

During National Volunteers Week, 19th to 25th May 2025, we like to take the opportunity to thank our dedicated volunteers who give up their time freely to support the Hospice.

Volunteer at Rudham Open Gardens and/or Wellingham Open Gardens

Volunteering at Tapping House Open Gardens

July

Sandringham Flower Show

Our famous bottle tombola is not one to be missed. We look for donation of bottles, of any kind to help us run this event. From shampoo to chardonnay we can use anything in a bottle.



August

Ron King Memorial Golf Day at Royal Norwich Golf Course - Friday 1st August 2025

Corporate team entry (team of 4)
Sponsor a hole



September

Tapping House Golf Day at King's Lynn Golf Club - Friday 12th September 2025

Corporate team entry (team of 4)
Sponsor a Hole - £150

The Big Half - Half Marathon in London - 10 places available Sunday 7th September 2025

Team Sky Dive for Tapping House



October

Hospice Care Week

National week of celebrations and awareness by Hospice UK. Mark the week in your own way - dress down days, bake sales etc



November

Shine A Light on Tapping House

Show your support for our established Light Up a Life campaign by sponsoring a light up star on the front of our building during December.

Gifts of Care

We try to make Christmas as special as possible for our patients and their loved ones. Part of that is being able to provide those staying with us over the festive period with a Christmas present.

December

Festive Fundraising Day

Pick a day in December to don your Christmas jumpers or festive head-wear and play those seasonal songs... you could include a raffle, quiz or bake sale too.



There are various volunteering opportunities throughout the year to be involved.

Key



Gardening



Retail



Maintenance

